

# TORUS 1250 VERTICAL

## Category II or Category IV Appliance

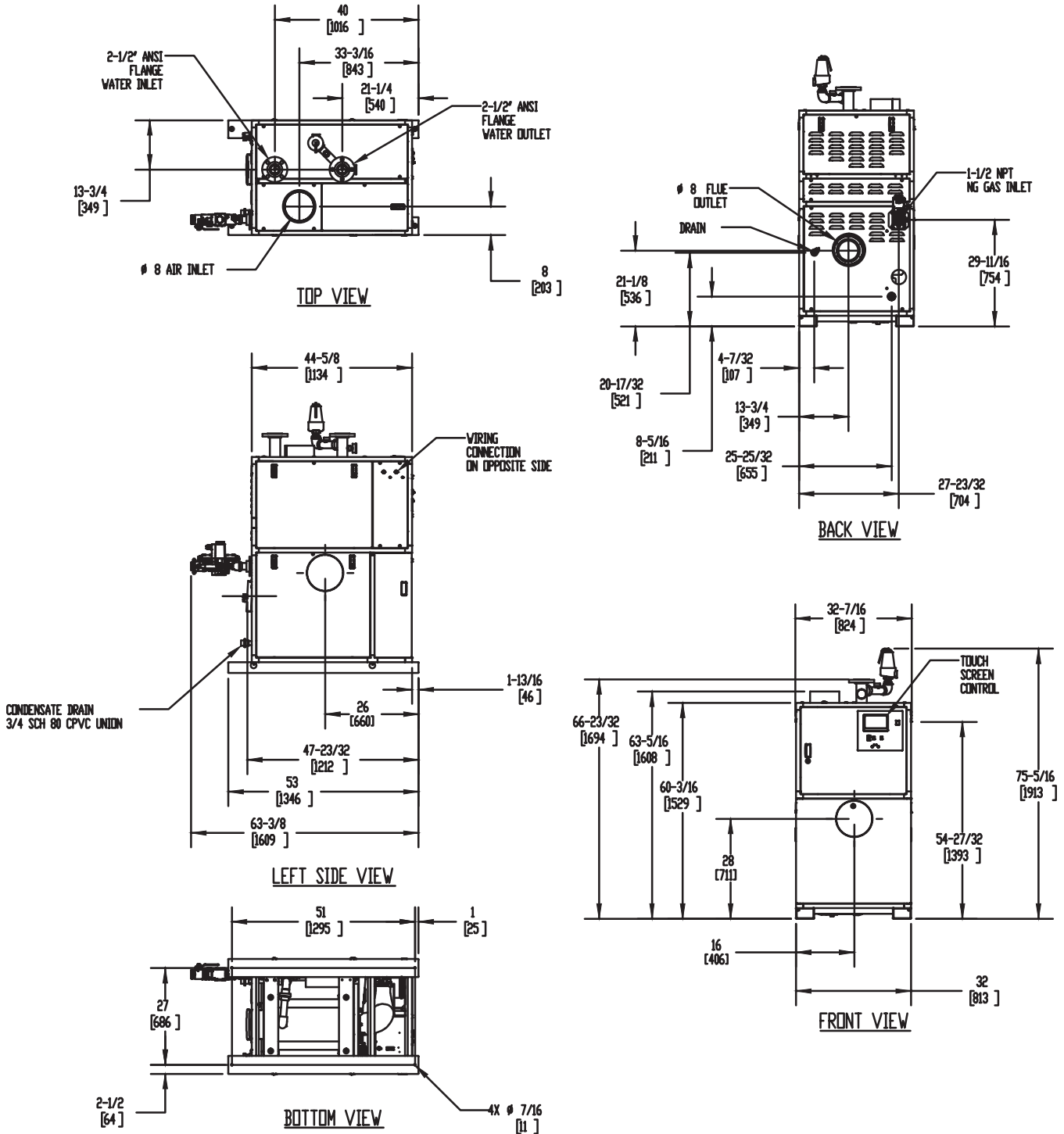
(see Installation and Operation Manual for venting information)

## CODE OPTIONS


CSD-1

FIRMWARE W/REMOTE TEST  
MANUAL RESET LWCO

## INDOOR UNIT



### Notes:

1. Dimensions are approximate and should not be used to "rough-in" equipment.
2. Dimensions are subject to change without notice.
3. All dimensions are in inches (mm).
4.  Symbol indicates center of gravity.

# TORUS 1250 VERTICAL

## Category II or Category IV Appliance

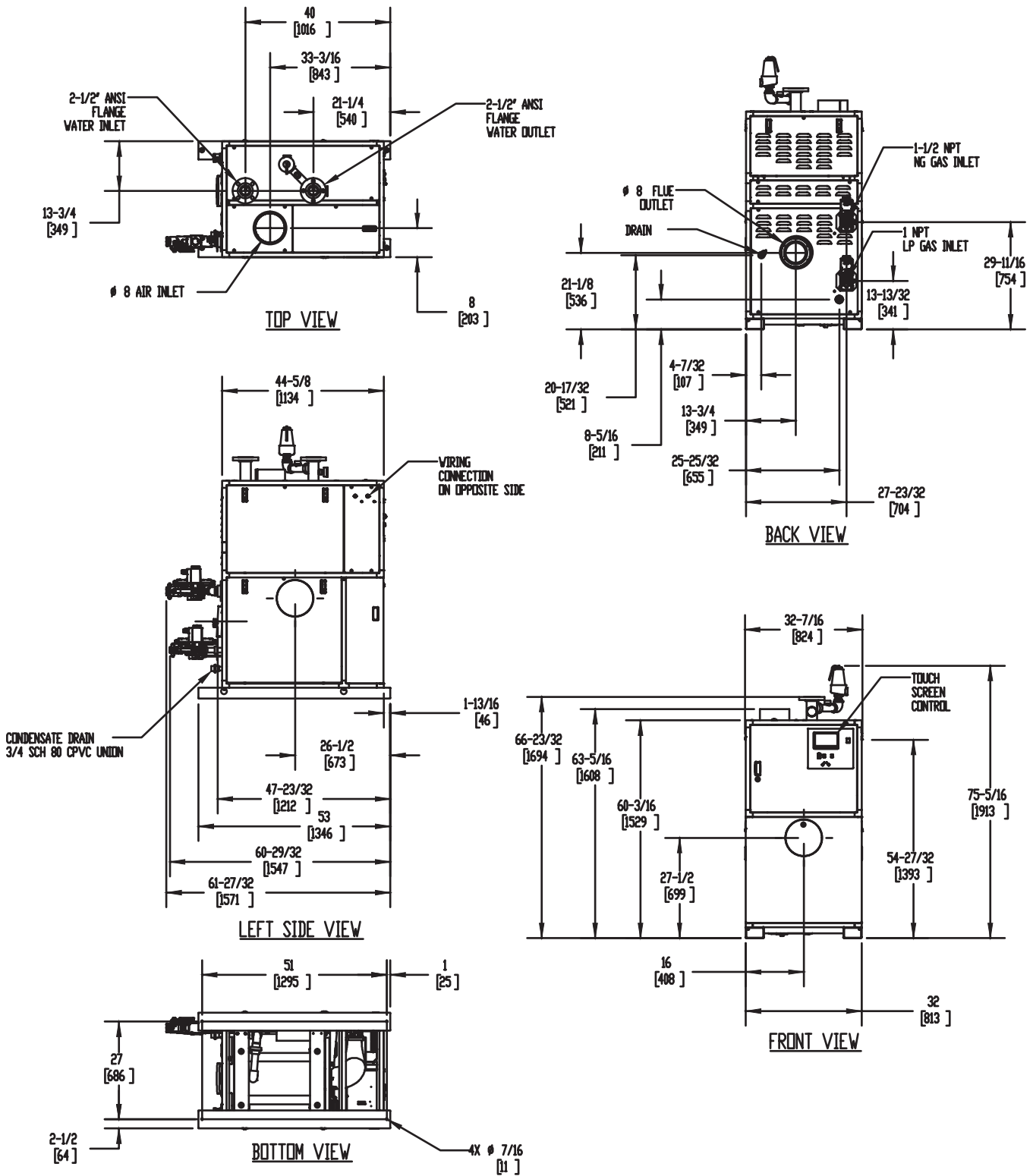
(see Installation and Operation Manual for venting information)

## CODE OPTIONS


CSD-1

FIRMWARE W/REMOTE TEST  
MANUAL RESET LWCO

## DUAL FUEL UNIT



### Notes:

1. Dimensions are approximate and should not be used to "rough-in" equipment.
2. Dimensions are subject to change without notice.
3. All dimensions are in inches (mm).
4.  Symbol indicates center of gravity.

## BOILER CERTIFIED RATINGS & CAPACITIES

<b>Fuel Type</b>	Natural/Propane Gas	<b>Boiler FLA</b>	17.14*
<b>Input BTU/hr.</b>	1,250,000 / 366 kW	<b>Boiler HP</b>	36.04
<b>Output BTU/hr.</b>	1,206,250 / 353 kW	<b>Min. Gas Pressure Required</b>	4"W.C.
<b>Electrical Requirements</b>	120 VAC/60 Hz/1PH	<b>Max. Gas Pressure Allowed</b>	14"W.C.
		<b>Operating Weight</b>	1084 lbs / 492 kg

## BOILER TRIM & CONTROLS

<b>Main Gas Valve</b>	Dungs MBC	<b>Air Switch</b>	Huba
<b>Firing Valve</b>	1" Apollo	<b>Flow Switch</b>	SIKA
<b>Ignition Control</b>	Fenwal	<b>Blocked Flue Switch</b>	Cleveland NS2
<b>Operating Control</b>	HeatNet®	<b>Blower Motor</b>	Ametek
<b>High Limit</b>	Jumo	<b>L.W.C.O.</b>	800
<b>Main Ball Valve</b>	1 1/2" Apollo	<b>Relief Valve (WB)</b>	1" x 1-1/4" set @ 50 psi
		<b>Relief Valve (WW)</b>	1" x 1" set @ 125 psi

Pump contactor strongly recommended for water heater applications.

## A.S.M.E.

<b>ASME Sect IV Fire Side</b>	100.17 Sq. Ft. / 9.31 Sq. M.	<b>Design Data</b>	Max. 160 psig & 210°F
<b>Htg Surface</b>		<b>Water Volume</b>	11 gal. / 41.6 Liters
<b>ASME Sect IV Water Side</b>	92.93 Sq. Ft. / 8.63 Sq. M.	<b>pH Level</b>	6.5-8.5
<b>Htg Surface</b>			

\* Add circulator amps.

## BOILER TEMPERATURE RISE / PRESSURE DROP (Based on Full Input)

20°F / 11.1°C				30°F / 16.7°C				40°F / 22.2°C				50°F / 27.8°C				60°F / 33.3°C			
Flow Rate		Pressure Drop		Flow Rate		Pressure Drop		Flow Rate		Pressure Drop		Flow Rate		Pressure Drop		Flow Rate		Pressure Drop	
GPM	L/s	Ft	kPa	GPM	L/s	Ft	kPa	GPM	L/s	Ft	kPa	GPM	L/s	Ft	kPa	GPM	L/s	Ft	kPa
120.7	7.6	17.2	45.9	80.4	5.1	7.7	21.7	60.3	3.8	4.7	13.9	48.3	3.0	3.6	10.7	40.2	2.5	3.0	9.1

Flow GPM (Boiler)				Temp. Rise (°F) (Boiler**)				Vent Length (Equiv. Ft.)				Air Inlet Length (Equiv. Ft.)			
Min		Max		Min		Max		Min		Max		Min		Max	
40.2		120.7		20		60		8		160		0		160	

\*\* Min/Max delta t reflects boiler operation at full input. For applications requiring operation above/below these parameters please consult factory.

## WATER HEATER HOURLY RECOVERY CAPACITY (GPH & LPH)

40°F	22°C	60°F	33°C	80°F	44°C	100°F	56°C	120°F	67°C	140°F	78°C
3639	13755	2426	9170	1819	6878	1456	5502	1213	4585	1040	3930

Water Heater Min Flow Rates							
Normal (4 to 12) gpg				Hard (12 to 15) gpg			
Flow Rate		Pressure Drop		Flow Rate		Pressure Drop	
gpm	L/s	Ft	kPa	gpm	L/s	Ft	kPa
110.5	7.0	14.4	43.1	147.3	9.3	25.5	76.2

<b>REP FIRM</b>	_____	<div><b>TORUS 1250 VERTICAL</b></div> <div><b>Category II or Category IV Appliance</b> (see Installation and Operation Manual for venting information)</div> <div>  <b>A Division of Mestek, Inc.</b>  Westfield, MA 01085  (413) 564-5515 </div>
<b>SUBMITTED BY</b>	_____	
<b>JOB NAME</b>	_____	
<b>ARCHITECT</b>	_____	
<b>ENGINEER</b>	_____	
<b>CONTRACTOR</b>	_____	
<b>DATE</b>	_____	